

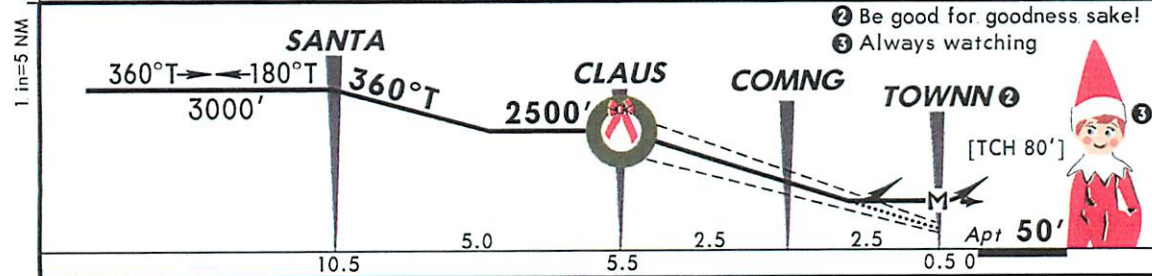
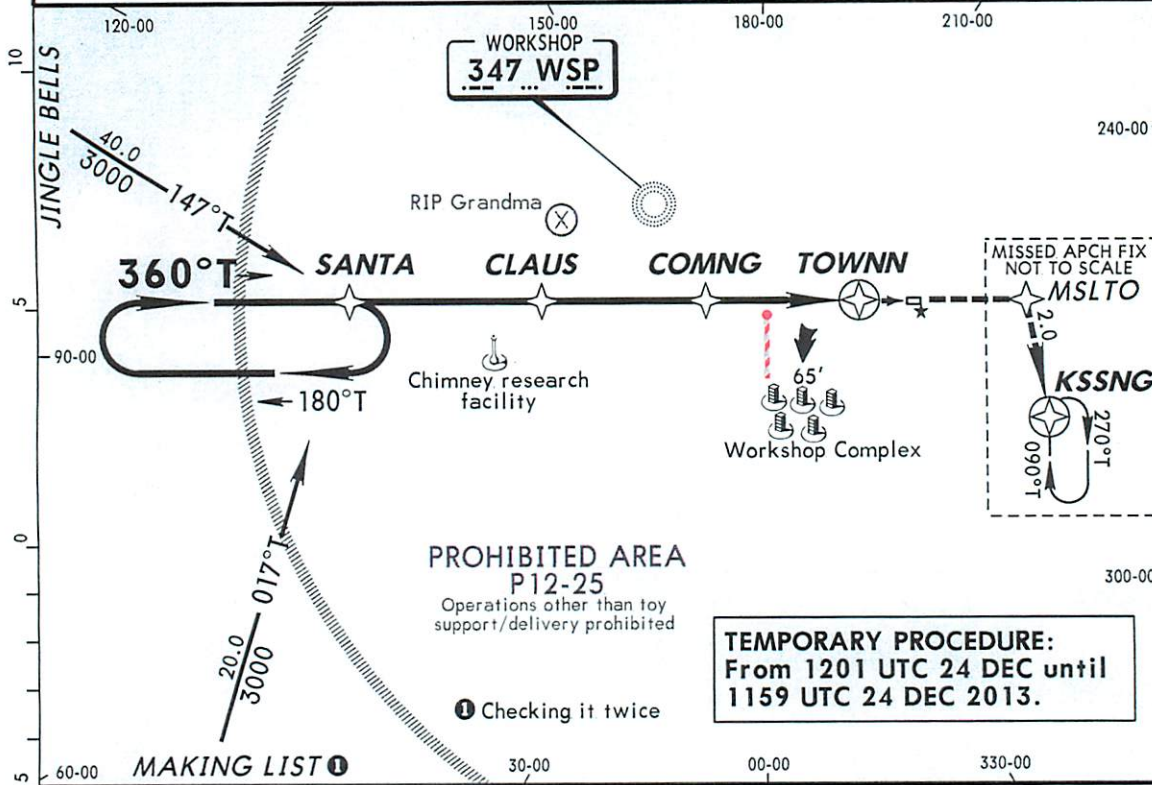
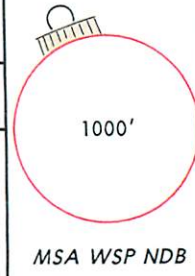


NTPL/POL
SANTA'S WORKSHOP INTL

JEPPESEN
12-25 25 DEC 13
24 Dec 1201Z

NORTH POLE VILLAGE
RNAV (GPS) Rwy 18

ARCTIC Center 122.8		NORTH POLE Approach 122.8 when ELFCOM inop.		WORKSHOP Traffic 122.8 when ELFCOM inop.	
RLS (Reindeer Landing System)	Final Apch Crs 360°T	Minimum Alt CLAUS 2500' (2450')	RLS DA(H) (CONDITIONAL) 250' (200')	Apt Elev 50'	Rwy 18 50'
MISSED APCH: Climb to 2500' direct MSLTO, then RIGHT turn direct KSSNG and hold.					
Alt Set: INCHES Trans level: FL 180 Trans alt: 18000' CAUTION: Departures may be illuminated by blinding red nose. CAUTION: Supersonic heavy departures; non-sleigh traffic discouraged. 1. Reindeer practice flights year-round. 2. Flights in the vicinity may be conducted under the influence of egg nog. 3. No unapproved winter operations. 4. Postal flights with letters to Santa receive priority sequencing. 5. Reindeer and Elves on and in vicinity of runway. 6. Runway does not maintain stationary location.					



Speed (Reindeer operating)	4	5	6	7	8	9	SALS TINSEL TWINKLE	2500'	MSLTO	
Glide Path Angle	[7.0°]	N/A	N/A	800	998	1140				1430
MAP at TOWNN										

STRAIGHT-IN LANDING RWY 18						CIRCLE-TO-LAND			
RLS DA(H) 250' (200')			LOC (Rudolph Out) DA(H) 400' (350')			LOC 2 or more reindeer inop MDA(H) 500' (450')			Authorized only when Rudolph available
FULL	TINSEL out	TWINKLE out	TINSEL out	TWINKLE out	TINSEL out	TWINKLE out	Rdr in Svc	MDA(H)	
6							6	750' (700')-2	
7	RVR 40 or 3/4	RVR 50 or 1	RVR 40 or 3/4	RVR 50 or 1	RVR 60 or 1 1/4		7	650' (600')-1 1/2	
8							8	550' (500')-1	
9							9	450' (400')-1	

MERRY OPS

CHANGES: Noel procedure.

© JEPPESEN, 2013. ALL RIGHTS RESERVED.



NTPL/POL

Apt Elev **50'**
N 90.0 W 0.0

WORKSHOP Traffic

122.8 when ELFCOM inop.

JEPPESEN

25 DEC 13 (12-25)
24 Dec 1201Z

NORTH POLE Approach

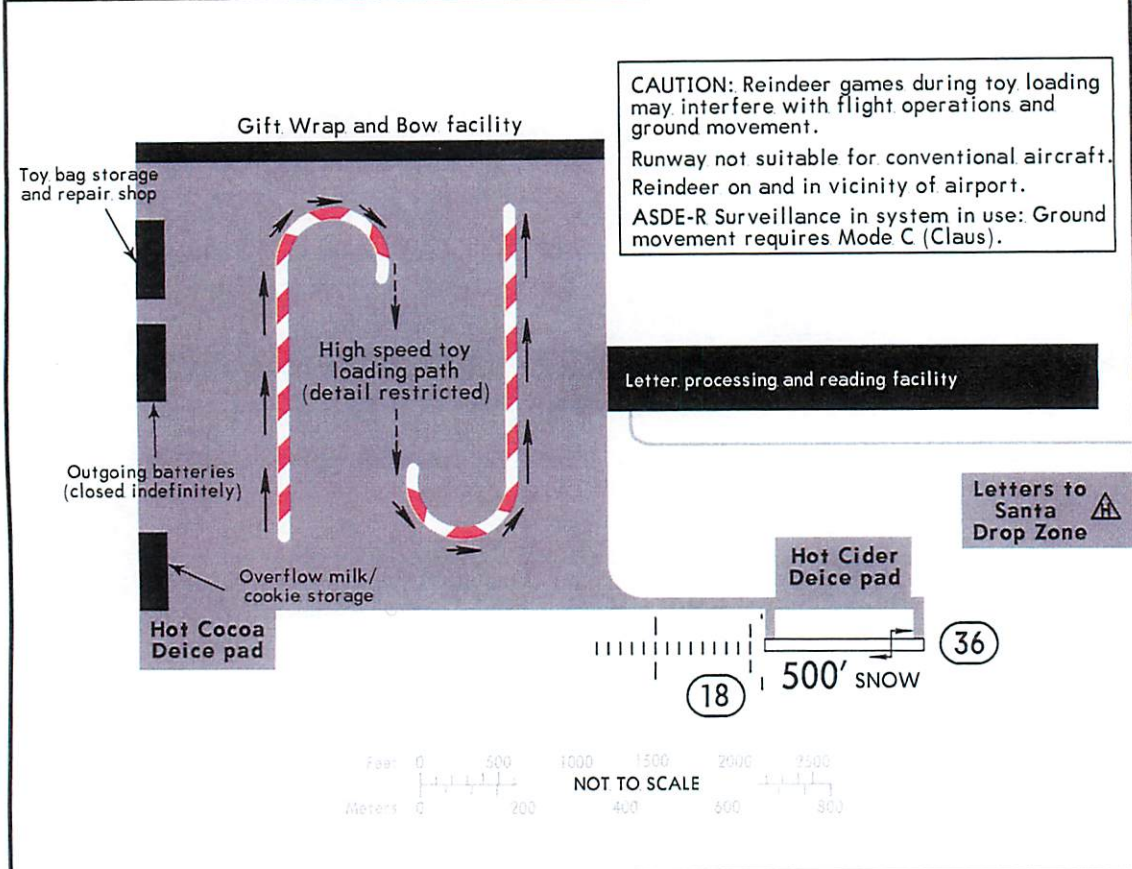
122.8 when ELFCOM inop.

NORTH POLE VILLAGE

SANTA'S WORKSHOP INTL

ARCTIC Center

122.8



CAUTION: Reindeer games during toy loading may interfere with flight operations and ground movement.
Runway not suitable for conventional aircraft. Reindeer on and in vicinity of airport.
ASDE-R Surveillance in system in use: Ground movement requires Mode C (Claus).

ADDITIONAL RUNWAY INFORMATION

RWY	REMARKS	USABLE LENGTHS		TAKE-OFF	WIDTH
		LANDING Threshold	BEYOND Glide Slope		
09 ① 27	RL ② TINSEL ② TWINKLE SALS Reindeer vis Range (RVR)	500'	450' 500'	500'	100' 33m

- ① Only hoof brakes permitted on runway.
 - ② Illuminated Dec 1 - Dec 31 annually.
- Decorated trees at both ends of Rwy may be mistaken for Rwy lighting.

TAKE-OFF		FOR FILING AS ALTERNATE	
Rwy 18		RNAV (GPS) Rwy 18	
	Adequate Red Nose Illum.	Under-the-weather, Nose Illum.	Other
6 - 7 Rdr	RVR 0	RVR 12	800-2
8 - 9 Rdr		RVR 7	



'Twas the night before Christmas and all 'round the field
 Santa's helpers were carrying all they could wield
 'Twas time to pitch in and load up the sleigh
 With every possible gift for work and for play
 "All hands to your stations", Santa did say
 "For it's almost time for the biggest of days"
 The day of the year and the fruit of our work
 Is almost upon us, so there's no time for a quirk
 The manifest lists the destination of each toy
 The fastest of sleds bound for each girl and boy
 As the takeoff begins, the sleigh starts to scream
 To deliver the toys as the children do dream
 Back at the pole, a big collective sigh
 The hard work is over, save for the big guy
 He's good at it though, it's not his first jaunt
 Bringing the toys you told him you want



Naughty/Nice List Last Minute Changes *It's never too late!*

<i>NICE</i>	Code	<i>NAUGHTY</i>	Code

Nice behavior change codes:

- 01 - Cleaning up room on own
- 02 - Helping parents
- 03 - Walking old lady across street
- 04 - Giving something to someone in need
- 05 - Cooperating with parents

- 06 - Cooperating with brothers/sisters
- 07 - Helping with pets
- 08 - Helping in kitchen/with meals
- 09 - Being nice
- 10 - Other

Naughty behavior change codes:

- 11 - Not listening to parents
- 12 - Peeking at/snooping for gifts
- 13 - Mean to brother/sister
- 14 - Not following rules
- 15 - Misbehavior in school
- 16 - Taking things that don't belong to him/her

- 17 - Getting into or stealing other's belongings
- 18 - Vandalism/throwing rocks
- 19 - Being a hellion
- 20 - Talking to strangers
- 21 - Telling lies
- 22 - Other

Letter and Wish List to Santa Claus

This year I have been:

Naughty

Nice

Dear Santa Claus,

Thank you,

Christmas List

<hr/>	<hr/>
<hr/>	<hr/>
<hr/>	<hr/>
<hr/>	<hr/>
<hr/>	<hr/>
<hr/>	<hr/>
<hr/>	<hr/>
<hr/>	<hr/>
<hr/>	<hr/>
<hr/>	<hr/>

For Workshop use only:
Received on: _____
Orders sent to elves: _____
Naughty/nice checked by: _____